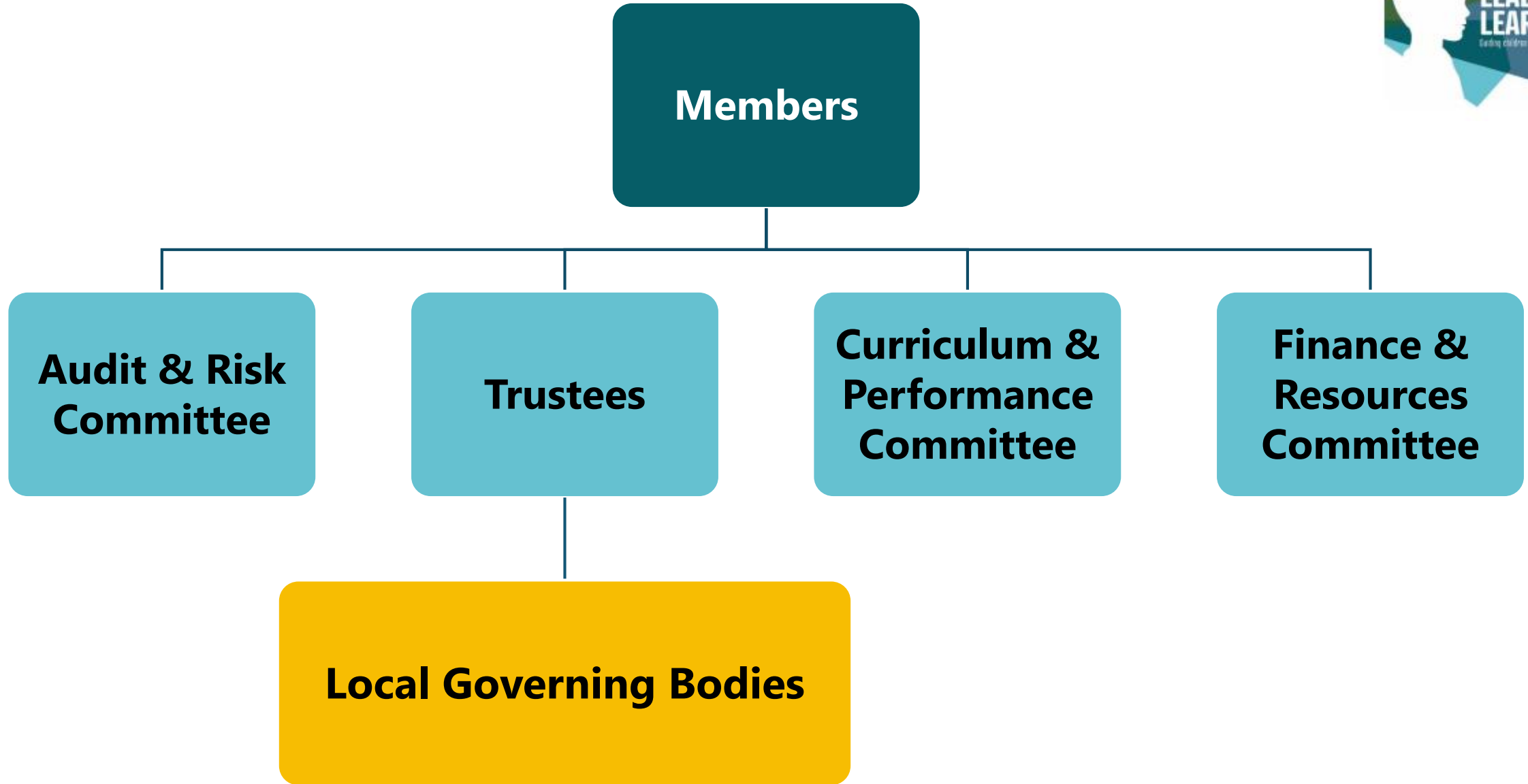


Leading Learners MAT Governance Structure



Summary of roles

Members determine the ethos and purpose of the Trust (and the way it will be governed (which are set out in the Articles of Association) and will have a right (not an obligation) to participate in governance by appointing and removing Trustees. They also have a right to receive the Trustees' annual report and accounts and to attend general meetings of the trust

Trustees are those people responsible for the carrying out of the business of the Trust. This will include Strategy, Financial stewardship and the Performance of all the schools in the MAT.

Trustees' skills are utilised by sitting on specialised committees to ensure effective oversight of Trust operations

Local Governing Bodies - each of our schools continue to have its own Local Governing Body which will serve as a committee of the Trust Board. They will continue to monitor outcomes and the experiences for children at their schools, develop links with their communities, set the school's strategic direction with the headteacher and review school-specific policies.

Focus of LGB's will be on SEND and inclusion, safeguarding, standards and stakeholder engagement.

LGB's feed into Trust objectives via regular Chairs Forum with the Chair of Trustees, ensuring their voice is heard.