

## Diary Dates

### Tuesday 9 June

Year 4 visit to Gurdwara

### Wednesday 10 June

Inflatable Fun Day—whole school

### Thursday 11 June

Butterfly Room trip to SeaLife & Lego-land

### Monday 15 June

Kickboxing Gradings 1 of 2

### Tuesday 16 June

Year 3 visit to Cliffe Castle

### Monday 22 June

Kickboxing Gradings 2 of 2

### Tuesday 23 June

Technology Free day

Nursery trip to Hesketh Farm



### Wednesday 24 June

Movie Night—*Swapped*

### Thursday 25 June

Year 6 trip to Flamingo Land

Year 5 rounders tournament

### Tuesday 30 June

Year 2 trip to Skipton Castle

Early Years Movie Night—*Lilo & Stitch*

### Tuesday 7 July

NSPCC visit—Speak Out, Stay Safe

### Wednesday 8 July

Year 5 visit to Murton Park

Year 1 Scarecrow's Wedding

### Friday 10 July

Sports Morning

### Thursday 16 July

End of year discos

### Monday 20 July

School closes for summer holidays



# Worth Valley Primary School NEWSLETTER



5 June 2026

## Headteacher's Message



I hope all our families enjoyed a restful and enjoyable half-term break. It has been wonderful to welcome the children back to school for what is always a busy and exciting final half term of the academic year.

The weeks ahead are packed with learning opportunities, special events and memorable experiences for our children. Although we are approaching the end of the school year, we certainly do not wind down. It is important that we continue to maintain the high standards and expectations that make our school such a positive place to learn and grow.

### Our key expectations remain:

- Excellent behaviour at all times
- Strong effort and positive attitudes to learning
- Good attendance and punctuality
- Respect for others and our school environment
- Resilience and determination when faced with challenges

These values underpin everything we do and help ensure that every child can achieve their very best.

### A few important reminders:

- Every day in school matters – please continue to support us by ensuring your child attends regularly and arrives on time.
- Children should wear the correct school uniform every day.
- Footwear must be black shoes or all-black trainers.
- PE lessons take place on Mondays and Fridays – please ensure children wear the correct PE kit on these days.
- Further information can be found in the Uniform Policy on our school website.

Thank you, as always, for your continued support. We look forward to a successful, productive, enjoyable and very busy final half term!

## Movie Night

Early Years Movie Night

Tuesday 30 June

Lilo & Stitch 5 minute stories



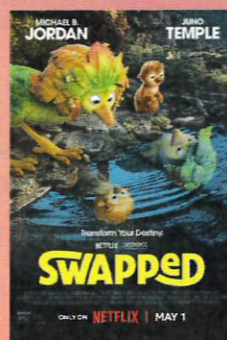
Movie night will finish at 4.20pm approx.  
Tickets are £2 and are available on ParentPay.

## Movie Night

Wednesday 24 June

*Swapped*

Movie night will finish at 5.00pm approx. Tickets cost £2 and are available on Parentpay.



## Attendance

Attendance data for the last 4 weeks is as follows:

w/c 27.4.26		w/c 4.5.26		w/c 11.5.26	
Reception	93.5%	Reception	99.0%	Reception	92.6%
Year 1	93.1%	Year 1	92.3%	Year 1	96.5%
Year 2	97.2%	Year 2	97.8%	Year 2	96.9%
Year 3	97.6%	Year 3	96.1%	Year 3	93.8%
Year 4	95.2%	Year 4	92.7%	Year 4	94.8%
Year 5	91.9%	Year 5	89.4%	Year 5	96.8%
Year 6	94.6%	Year 6	96.2%	Year 6	99.2%
Butterfly Room	96.3%	Butterfly Room	94.8%	Butterfly Room	98.8%

w/c 18.5.26	
Reception	83.2%
Year 1	92.3%
Year 2	96.6%
Year 3	89.7%
Year 4	91.4%
Year 5	89.3%
Year 6	86.1%
Butterfly Room	81.3%

### School Holiday Dates 2026-2027

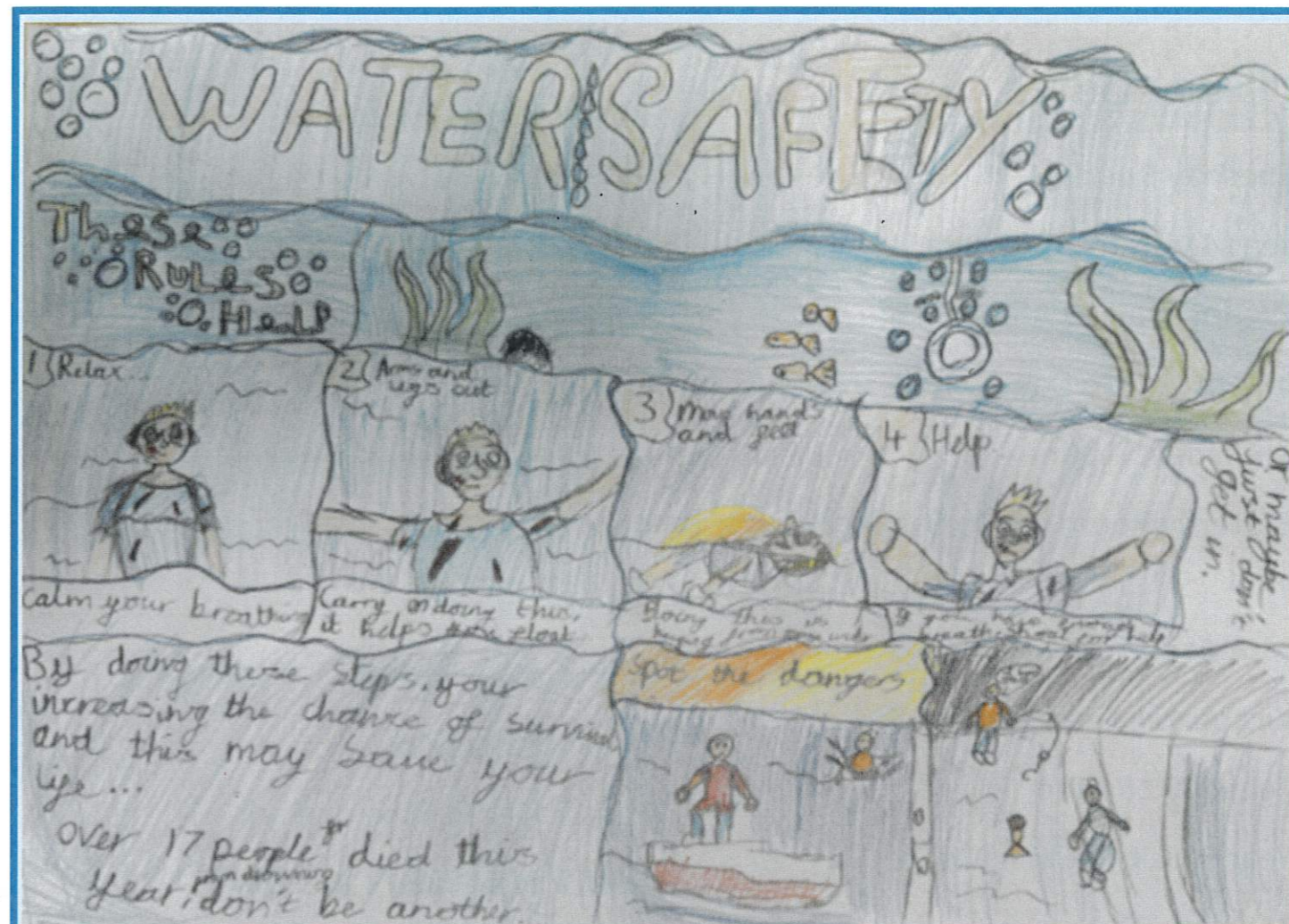
Next year's school holiday dates are available to view on our school website.

Please visit [www.worthvalleyprimary.co.uk](http://www.worthvalleyprimary.co.uk) and click on the 'Our School' tab, then 'School Holidays' and select 'School Holiday Schedule 2026-2027'.

### Download the Arbor Parent App

We encourage all parents and carers to download the free Arbor Parent App and Parent Portal. As our school management information system, Arbor is becoming an increasingly important way for us to communicate with families, including through text messages and emails.

Downloading the app will help you stay up to date with important school information and communications. Further information on how to access and set up your account can be found in the information sheet sent home with this newsletter.



### Water Safety

We have all been saddened by the tragic reports in recent weeks of people losing their lives in open water, many of whom were children and teenagers.

Water safety is - and always has been - an important part of our PSHE curriculum. This week, we have revisited this learning with all pupils to ensure that the risks associated with rivers, lakes, reservoirs and other open-water locations are at the forefront of their minds.

As the weather becomes warmer and children spend more time outdoors, we would encourage all families to continue these important conversations at home. Understanding the dangers of open water and knowing how to stay safe can help prevent future tragedies.

### Updated Policies

In line with updated government guidance, we have recently updated the Trust's policy on the use of restrictive force and seclusion. If you would like to find out more, please visit:

<https://www.leadinglearnersmat.co.uk/Our-Policies/>

We have also introduced a new policy regarding pupils' use of mobile devices. This is available to read on our school website under the policies tab.